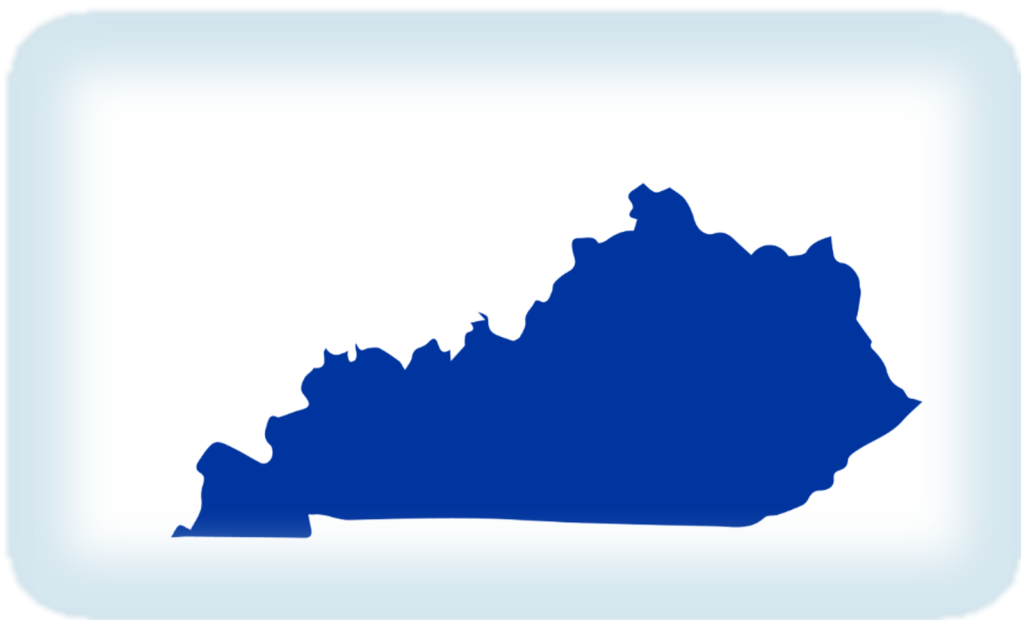


KENTUCKY INJURY INDICATORS



2020

KENTUCKY VIOLENCE AND INJURY PREVENTION PROGRAM (KVIPP)

COOPERATIVE AGREEMENT No. NU17CE010064

KENTUCKY INJURY PREVENTION AND RESEARCH CENTER

FEBRUARY 2022



This page intentionally left blank.

ACKNOWLEDGMENTS

This report is funded through the Core State Injury Prevention Program by the National Center on Injury Prevention and Control at the Centers for Disease Control and Prevention, Agreement No. NU17CE010064.

Prepared by

**Lara Daniels
Ashley M. Bush**

Released by

Kentucky Violence and Injury Prevention Program
Kentucky Injury Prevention and Research Center
University of Kentucky College of Public Health
Lexington, Kentucky 40504

Suggested citation: *Kentucky Injury Indicators, 2020*. Kentucky Injury Prevention and Research Center; 2022.

This page intentionally left blank.

TABLE OF CONTENTS

Abbreviations	1
Executive Summary	2
Data Sources and Methods	3
10 Leading Causes of Injury by Age Group and Intent	
Definitions for Injury Data Matrices	5
Mortality.....	6
Inpatient Hospitalizations	7
Emergency Department Visits	8
Injury Indicators	
All Injuries.....	9
Unintentional Falls.....	11
Unintentional Fire-Related Injuries.....	13
Firearm-Related Injuries	15
Homicide and Assault	17
Unintentional Motor Vehicle Traffic Crashes	19
Non-Drug Poisoning	21
Drug Poisoning	23
Suicide and Self-Injury	25
Traumatic Brain Injury.....	27

Abbreviations

CDC	Centers for Disease Control and Prevention
CSTE	Council of State and Territorial Epidemiologists
ED	emergency department
ICD	International Classification of Diseases
ICD-CM	International Classification of Diseases, Clinical Modifications
KIPRC	Kentucky Injury Prevention and Research Center
MV	motor vehicle
ATV	all-terrain vehicle
PCR	police collision report
TBI	traumatic brain injury

Executive Summary

Kentucky's overall age-adjusted injury mortality rate was 107.6 per 100,000 Kentucky resident population. The male and female age-adjusted rates were 154.7 and 62.2, respectively.

The age-adjusted rate for injury-related inpatient hospitalizations per 100,000 population was 448.7 per 100,000 Kentucky resident population in 2020. The male and female age-adjusted rates were 452.9 and 432.0, respectively.

The age-adjusted rate for injury-related emergency department visit discharges per 100,000 Kentucky resident population was 8,634.9 in 2020. The male and female age-adjusted rates were 8,946.3 and 8,285.0, respectively.

Mortality

There were 4,803 injury mortalities among Kentucky residents in 2020. The leading mechanisms of injury mortality for Kentucky residents in 2020 were *poisonings* (2,037), firearms (860), and motor *vehicle traffic crashes* (714). Ninety-six percent of the poisonings were drug poisonings. Among the drug poisonings (1,965), 97% were unintentional drug overdoses involving prescription medications and/or illicit drugs. The leading injury mechanisms among intentional deaths (suicides and homicides) were *firearms* (72%) and *suffocation/hanging* (16%).

There were 1,054 mortalities from traumatic brain injuries (TBI), where TBI was reported as a cause of death on the death certificate alone or in combination with other injuries or conditions. Among TBI-related mortalities, 52% were intentional and 47% were unintentional.

Inpatient Hospitalizations

There were 22,305 injury-related inpatient hospitalization encounters among Kentucky residents in 2020. The leading mechanisms of injury-related inpatient hospitalizations were *falls* (11,279), *poisonings* (3,490), and *motor vehicle traffic crashes* (2,296). The majority of fall-related hospitalizations were unintentional (99.9%), occurring among Kentucky residents age 45 years and older (94%). Of the 3,308 drug poisonings, 1,910 (58%) were unintentional and 1,272 (38%) were intentionally self-directed/inflicted. The leading mechanism of intentional injury-related inpatient hospitalizations was *drug poisoning* (58%).

TBI (either TBI alone or in combination with other injuries) accounted for 2,922 hospitalizations. The majority of the TBI-related inpatient hospitalizations were unintentional (84%). *Falls* (52%) and *motor vehicle traffic crashes* (22%) were the leading mechanisms of TBI-related hospitalizations.

Emergency Department Visits

There were 379,297 injury-related emergency department (ED) visits among Kentucky residents in 2020. The leading mechanisms of injury-related ED visits were *falls* (117,623), *unspecified* (57,658), being *struck by or against an object or person* (45,262), and *motor vehicle traffic crashes* (42,080). The leading mechanism of intentional injury-related ED visits was *struck by/against* (53%), followed by poisonings (12%) and cut/pierces (10%).

TBI (either TBI alone or in combination with other injuries) accounted for 9,790 ED visits. The majority of the TBI-related ED visits were unintentional (86%). Falls (42%), struck by/against (21%), and motor vehicle traffic crashes (19%) were the leading mechanisms of TBI-related ED visits.

Data Sources and Methods

Data Sources

All data are provisional and subject to change.

Population Data

United States Census, Population Division. “Annual Estimates of the Resident Population by Single Year of Age and Sex for the U.S., States, and Puerto Rico Commonwealth: 2020 Population Estimates”. Population is limited to Kentucky residents.

Mortality Data

Kentucky Death Certificate Database, Kentucky Office of Vital Statistics, Cabinet for Health and Family Services.

Inpatient Hospitalization Discharge Data

Kentucky Inpatient Hospitalization Claims Files, Office of Health Data and Analytics, Cabinet for Health and Family Services. Note: Counts represent encounters of care and could be greater than the number of individual patients treated at an acute care facility.

Emergency Department Visit Discharge Data

Kentucky Outpatient Services Database, Office of Health Data and Analytics, Cabinet for Health and Family Services. Note: Counts represent encounters of care and could be greater than the number of individual patients treated.

Methods

All data were limited to Kentucky residents.

Injury-Related Mortality

The definitions for fatal injuries (deaths) used in this report correspond to the Centers for Disease Control and Prevention’s (CDC’s) “State Injury Indicators Report: Instructions for Preparing 2019 Data.” The underlying cause of death field was used to identify the mechanism and manner of fatal injuries.

PLEASE NOTE: *Death counts in this report are based on state death certificate files and thus cannot be expected to match counts based on other sources. In particular, numbers of motor vehicle traffic deaths will not match those based on police collision reports (PCRs) because the two systems do not report on identical underlying populations. Death certificates capture deaths of Kentucky residents regardless of where they occur; PCRs capture deaths that occur on Kentucky roads only, regardless of state of residence. Similarly, counts of homicides and assaults in this report will not match counts based on police crime reports. These data sources should be viewed as complementary. There also exist specialized death certificate-based surveillance systems for injury mortalities at both the state (e.g., the Kentucky Violent Death Reporting System and Child Fatality Reviews) and national levels (e.g., CDC’s Web-Based Injury Statistics Query and Reporting System/WISQARS™ and Wide-ranging Online Data for Epidemiologic Research/WONDER). Counts from those systems may not exactly match counts in this report due to differences in inclusion criteria, case definitions, the use of ancillary data sources for case identification, or other factors.*

Injury-Related Inpatient Hospitalizations

Hospitalizations were limited to discharges from nonfederal, acute care, or inpatient facilities. The CDC's surveillance definition for injury hospitalizations was used; only initial encounters were included (indicated by a seventh character of "A" or missing in the International Classification of Diseases, Tenth Revision, Clinical Modification [ICD-10-CM] code). The injury subset for hospitalizations was created by selecting discharges having a principal diagnosis code.

The CDC external causes of injury matrix (updated November 2021) was used to categorize the injury visit by mechanism of injury and intent. Injury details were provided using external cause of morbidity codes, which are not required for discharge billing purposes; therefore, every injury hospitalization may not have this level of detail. Traumatic brain injury hospitalizations were defined using the Council of State and Territorial Epidemiologists (CSTE) Injury Surveillance Toolkit, last updated July 7, 2021. Note that inpatient hospitalizations resulting in death are included in the total inpatient injury hospitalization count.

PLEASE NOTE: In October 2015, health care discharge data (injury hospitalization encounters) coding systems transitioned from ICD-9-CM to ICD-10-CM. The coding system transition should be considered when interpreting the data, and trend analysis using ICD-9-CM coded data for some years and ICD-10-CM coded data for other years is not recommended due to substantial differences and a lack of one-to-one correspondence between ICD-9-CM and ICD-10-CM.

Injury-Related Emergency Department Visits

The CDC's surveillance definition for injury emergency department visits was used; only initial encounters were included (seventh character of "A" or missing) in the ED data set using ICD-10-CM diagnosis codes or external cause codes. The injury subset for ED visits was used, applying an any mention approach.

The CDC's external causes of injury matrix (updated November 2021) was used to categorize the injury visit by mechanism of injury and intent. The external causes of morbidity, which were used to provide injury details, are not required for discharge billing purposes; therefore, every injury ED visit may not have this level of detail. Traumatic brain injuries were defined using the CSTE Injury Surveillance Toolkit, updated July 7, 2021. Note that ED visits, including those resulting in inpatient hospitalization or death, are included in the total injury ED visit count.

PLEASE NOTE: In October 2015, health care discharge data (emergency department visit encounters) coding systems transitioned from ICD-9-CM to ICD-10-CM. The coding system transition should be considered when interpreting the data, and trend analysis using ICD-9-CM coded data for some years and ICD-10-CM coded data for other years is not recommended due to substantial differences and a lack of one-to-one correspondence between ICD-9-CM and ICD-10-CM.

Calculation of Rates and Data Presentation

Two types of rates are reported. Age-specific ("crude") rates were calculated by dividing the number of injury events occurring in a particular age group by the estimated number of Kentucky residents in that age group in 2020 and multiplying by 100,000. Age-adjusted rates were adjusted to the year 2000 standard population. Rates based on counts of 20 or fewer may be unstable.

Data are presented as aggregated counts. Certain counts have been suppressed because either the observed number of injury events is very small (a count of at least one but fewer than five) and not appropriate for publication or the count can be used to calculate the number in a count that has been suppressed.

Definitions for Injury Data Matrices

Motor vehicle non-traffic (MV non-traffic)—Includes motor vehicle crashes that occurred somewhere other than on a public roadway.

Motor vehicle traffic (MV traffic)—Includes crashes that occurred on a public roadway and involved at least one motor vehicle. All persons injured in MV traffic incidents are counted here. Pedal cyclists and pedestrians who were struck by a motor vehicle would be counted here, but those who crashed on a public roadway without involvement of a motor vehicle would be counted elsewhere (see “Pedal cyclist, other” definition).

Natural/Environmental—Includes causes related to nature and the environment (insect bites and stings, animal bites, extreme weather, excessive heat or cold, etc.).

Other land transport—Includes motor vehicle crashes that occurred somewhere other than on a public roadway, rail injuries, etc. Does not include air or water injuries.

Other specified—Includes a variety of relatively low-incidence causes of injury grouped together. Includes causes not elsewhere classified; an external cause of injury code that is intended for use when no other code exists to adequately describe the mechanism and manner of injury.

Pedal cyclist, other—Includes pedal cyclists who crashed on a public roadway without involvement of a motor vehicle.

Poisoning—Includes drug and non-drug poisonings, unless otherwise noted.

Self-harm/Suicide—Includes injuries resulting from behaviors deliberately trying to harm or injure oneself. Data for persons aged <10 years are not shown, as it is difficult to determine suicide intent among younger children.

Tie—Indicates a tied count for a leading cause of injury-related mortality or morbidity.

Unspecified—Includes injuries for which an external code of injury either (a) was not specified or (b) was specified but did not indicate the mechanism or manner of injury.

10 Leading Causes of Injury-Related Mortality by Age Group and Intent, 2020 Kentucky Residents

Rank	<1 years	1-4 years	5-9 years	10-14 years	15-19 years	20-24 years	25-34 years	35-44 years	45-54 years	55-64 years	65-74 years	75-84 years	85+ years
1	Suffocation 24	Motor Vehicle Traffic 5	Motor Vehicle Traffic 5	Motor Vehicle Traffic 10	Tie* 48	Poisoning 107	Poisoning 462	Poisoning 564	Poisoning 409	Poisoning 307	Poisoning 74	Fall 90	Fall 112
2				Suffocation 6	Firearm 26	Motor Vehicle Traffic 78	Motor Vehicle Traffic 141	Motor Vehicle Traffic 110	Motor Vehicle Traffic 96	Tie* 87	Fall 62	Unspecified 54	Unspecified 106
3					Poisoning 15	Firearm 48	Firearm 87	Firearm 71	Firearm 72	Fall 25	Motor Vehicle Traffic 61	Motor Vehicle Traffic 51	Motor Vehicle Traffic 20
4					Suffocation 8	Firearm 43	Firearm 68	Firearm 63	Firearm 33	Firearm 22	Firearm 58	Firearm 48	Suffocation 19
5						Suffocation 13	Suffocation 50	Suffocation 54	Suffocation 30	Poisoning 15	Unspecified 36	Suffocation 20	Firearm 18
6						Drowning 5	Drowning 9	Poisoning 11	Fall 13	Suffocation 14	Suffocation 19	Poisoning 14	Tie* 6
7							Tie* 6	Poisoning 9	Poisoning 11	Suffocation 13	Fire/Flame 16	Fire/Flame 8	
8								Tie* 7	Other Specified 9	Unspecified 11	Firearm 14	Natural/ Environmental 5	
9								Tie* 6	Fire/Flame 8	Natural/ Environmental 9	Other Specified 7		
10								Tie* 5	Tie* 7	Machinery 8	Tie* 6		

Unintentional	Injury Intent	Undetermined
Suicide	Homicide	

*Indicates a tied count for leading injury-related deaths.
Counts less than five are not included in this matrix. Produced by the Kentucky Injury Prevention and Research Center, as a bona fide agent for the Kentucky Department for Public Health. September 2021. This product was supported by grants numbers NU17CE010064 (Centers for Disease Control and Prevention) and 3048114413. Data source: Kentucky Death Certificate Database, Kentucky Office of Vital Statistics, Cabinet for Health and Family Services. Data are provisional and subject to change.



10 Leading Causes of Injury-Related Inpatient Hospitalizations by Age Group and Intent, 2020 Kentucky Residents

Rank	≤1 years	1-4 years	5-9 years	10-14 years	15-19 years	20-24 years	25-34 years	35-44 years	45-54 years	55-64 years	65-74 years	75-84 years	85+ years
1	Child/ Adult Abuse 54	Fall 46	Fall 48	Drug Poisoning 72	Motor Vehicle Traffic 154	Motor Vehicle Traffic 182	Motor Vehicle Traffic 379	Drug Poisoning 399	Fall 571	Fall 1,438	Fall 2,367	Fall 3,341	Fall 2,868
2	Fall 34	Drug Poisoning 38	Motor Vehicle Traffic 32	Motor Vehicle Traffic 45	Drug Poisoning 142	Drug Poisoning 129	Drug Poisoning 350	Motor Vehicle Traffic 387	Drug Poisoning 328	Drug Poisoning 352	Motor Vehicle Traffic 232	Motor Vehicle Traffic 152	Motor Vehicle Traffic 60
3	Unspecified 11	Motor Vehicle Traffic 24	Motor Vehicle Non-Traffic 15	Fall 34	Firearm 57	Drug Poisoning 104	Drug Poisoning 240	Fall 288	Motor Vehicle Traffic 297	Motor Vehicle Traffic 338	Drug Poisoning 161	Drug Poisoning 93	Struck By/Against 44
4	Drug Poisoning 5	Child/ Adult Abuse 18	Pedal Cyclist/ Other 13	Motor Vehicle Non-Traffic 33	Motor Vehicle Non-Traffic 48	Fall 51	Fall 148	Drug Poisoning 237	Drug Poisoning 214	Drug Poisoning 158	Struck By/Against 68	Unspecified 72	Unspecified 38
5		Hot Object /Substance 15	Blister/Sting 7	Unspecified 11	Drug Poisoning 40	Firearm 44	Firearm 73	Motor Vehicle Non-Traffic 52	Motor Vehicle Non-Traffic 51	Unspecified 65	Unspecified 61	Struck By/Against 62	Drug Poisoning 35
6		Foreign Body 8	Tie* 6	Tie* 9	Fall 37	Tie* 38	Firearm 63	Unspecified 51	Unspecified 49	Struck By/Against 45	Drug Poisoning 60	Foreign Body 18	Tie* 8
7		Tie* 5	Tie* 5	Tie* 6	Firearm 23	Cut/Pierce 17	Motor Vehicle Non-Traffic 49	Struck By/Against 43	Struck By/Against 38	Motor Vehicle Non-Traffic 35	Motor Vehicle Non-Traffic 25	Drug Poisoning 17	Suffocation 7
8				Fire/Flame 5	Struck By/Against 14	Other Specified 14	Cut/Pierce 34	Firearm 38	Struck By/Against 31	Struck By/Against 32	Foreign Body 18	Motor Vehicle Non-Traffic 14	Natural/ Environmental 6
9				Unspecified 13	Unspecified 13	Other Land Transport 13	Struck By/Against 33	Firearm 34	Firearm 28	Non-Drug Poisoning 29	Overexertion 17	Tie* 11	Tie* 5
10				Cut/Pierce 12	Cut/Pierce 12	Tie* 12	Drug Poisoning 28	Drug Poisoning 31	Cut/Pierce 27	Other Land Transport 27	Tie* 16	Tie* 10	

Unintentional	Injury Intent	Undetermined
Self-Harm	Assault	

*Indicates a tied count for leading injury-related inpatient hospitalizations. Counts represent encounters of care and could be greater than the number of individual patients treated at an acute care facility. Counts less than five are not included in this matrix. Produced by the Kentucky Injury Prevention and Research Center, as bona fide agent for the Kentucky Department for Public Health, September 2021. This product was supported by grants numbers NU17CE010064 (Centers for Disease Control and Prevention) and 30481114413. Data source: Kentucky Inpatient Hospitalization Claims Files, Office of Health Data and Analytics. Data are provisional and subject to change.



10 Leading Causes of Injury-Related Emergency Department Visits by Age Group and Intent, 2020 Kentucky Residents

Rank	≤1 years	1-4 years	5-9 years	10-14 years	15-19 years	20-24 years	25-34 years	35-44 years	45-54 years	55-64 years	65-74 years	75-84 years	85+ years
1	Fall 1,671	Fall 9,287	Fall 6,557	Fall 5,491	Motor Vehicle Traffic 4,744	Motor Vehicle Traffic 5,340	Fall 8,990	Fall 9,966	Fall 12,392	Fall 15,419	Fall 15,374	Fall 14,046	Fall 9,657
2	Unspecified 242	Struck By/Against 2,923	Struck By/Against 2,923	Struck By/Against 3,075	Fall 4,411	Fall 4,313	Motor Vehicle Traffic 8,500	Motor Vehicle Traffic 6,689	Motor Vehicle Traffic 5,470	Motor Vehicle Traffic 4,152	Motor Vehicle Traffic 2,271	Struck By/Against 1,154	Struck By/Against 574
3	Struck By/Against 240	Unspecified 1,937	Cut/Pierce 1,614	Cut/Pierce 1,745	Struck By/Against 3,568	Struck By/Against 3,011	Struck By/Against 5,239	Struck By/Against 4,360	Unspecified 3,768	Struck By/Against 2,867	Struck By/Against 1,905	Unspecified 997	Unspecified 514
4	Motor Vehicle Traffic 162	Bite/Sting 1,397	Bite/Sting 1,367	Overexertion 1,593	Overexertion 2,081	Cut/Pierce 2,500	Cut/Pierce 4,840	Unspecified 4,285	Struck By/Against 3,833	Unspecified 2,871	Unspecified 1,825	Motor Vehicle Traffic 949	Motor Vehicle Traffic 216
5	Foreign Body 122	Cut/Pierce 1,108	Motor Vehicle Traffic 1,276	Motor Vehicle Traffic 1,507	Cut/Pierce 2,035	Overexertion 2,160	Unspecified 4,407	Cut/Pierce 4,256	Overexertion 3,556	Cut/Pierce 2,750	Cut/Pierce 1,553	Cut/Pierce 609	Cut/Pierce 179
6	Other Specified 105	Foreign Body 1,055	Unspecified 1,222	Unspecified 1,323	Unspecified 1,710	Unspecified 1,932	Overexertion 4,324	Overexertion 4,074	Cut/Pierce 3,248	Overexertion 2,458	Overexertion 1,128	Overexertion 503	Overexertion 169
7	Bite/Sting 104	Motor Vehicle Traffic 756	Pedal Cyclist, Other 637	Bite/Sting 903	Struck By/Against 981	Struck By/Against 1,317	Drug Poisoning 2,902	Drug Poisoning 2,379	Bite/Sting 1,552	Bite/Sting 1,338	Bite/Sting 788	Bite/Sting 343	Foreign Body 103
8	Child/ Adult Abuse 86	Drug Poisoning 648	Other Specified 607	Pedal Cyclist, Other 675	Bite/Sting 824	Bite/Sting 978	Struck By/Against 2,560	Struck By/Against 1,993	Struck By/Against 1,368	Drug Poisoning 866	Foreign Body 385	Foreign Body 246	Bite/Sting 80
9	Cut/Pierce 72	Other Specified 639	Overexertion 529	Motor Vehicle Non-Traffic 551	Motor Vehicle Non-Traffic 781	Drug Poisoning 772	Bite/Sting 1,865	Bite/Sting 1,818	Drug Poisoning 1,231	Struck By/Against 781	Drug Poisoning 339	Drug Poisoning 149	Drug Poisoning 71
10	Hot Object /Substance 64	Overexertion 553	Foreign Body 477	Other Specified 528	Other Specified 591	Other Specified 657	Other Specified 1,110	Other Specified 980	Other Specified 728	Other Specified 566	Machinery 271	Other Specified 116	Other Specified 54

Unintentional	Self-Harm	Assault	Undetermined
---------------	-----------	---------	--------------

Counts represent encounters of care and could be greater than the number of individual patients treated. Counts less than five are not included in this matrix. Produced by the Kentucky Injury Prevention and Research Center, as bona fide agent for the Kentucky Department for Public Health. September 2021. This product was supported by grants numbers NU17CE010064 (Centers for Disease Control and Prevention) and 30481114413. Data source: Kentucky Outpatient Services Database, Office of Health Data and Analytics. Data are provisional and subject to change.



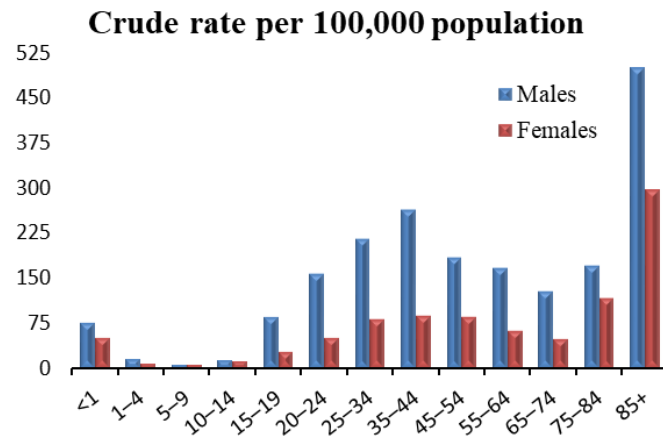
All Injuries by Age and Sex

Mortality

Total: 4,830 (107.6*)

Males: 3,356 (154.7*)

Females: 1,474 (62.2*)



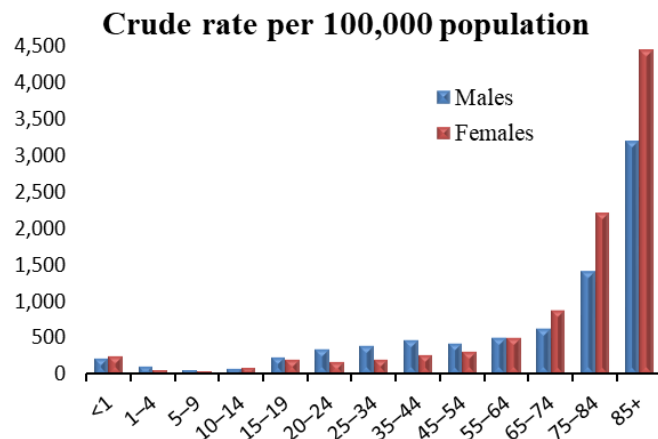
Age	Males	Females
<1	20	13
1-4	16	8
5-9	7	8
10-14	19	15
15-19	123	37
20-24	240	73
25-34	646	234
35-44	720	238
45-54	506	235
55-64	476	189
65-74	275	117
75-84	166	147
85+	142	160

Inpatient Hospitalizations

Total: 22,305 (448.7*)

Males: 10,182 (452.9*)

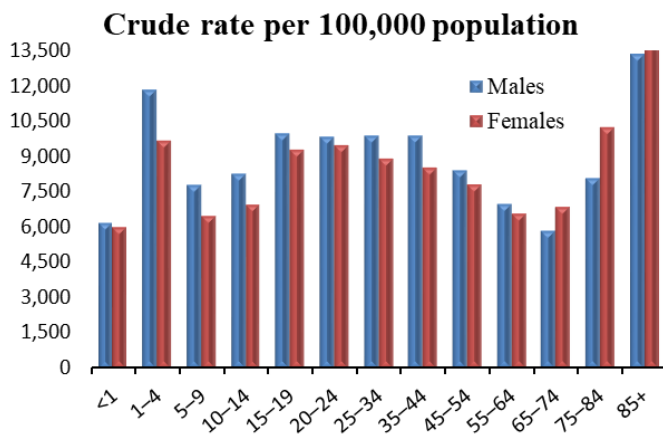
Females: 12,123 (432.0*)



Age	Males	Females
<1	60	68
1-4	124	78
5-9	94	71
10-14	135	145
15-19	363	303
20-24	542	261
25-34	1,195	595
35-44	1,308	739
45-54	1,204	900
55-64	1,482	1,564
65-74	1,371	2,163
75-84	1,397	2,833
85+	907	2,403

Emergency Department Visits

Total: 379,297 (8,634.9*) Males: 192,336 (8,946.3*) Females: 186,961 (8,285.0*)



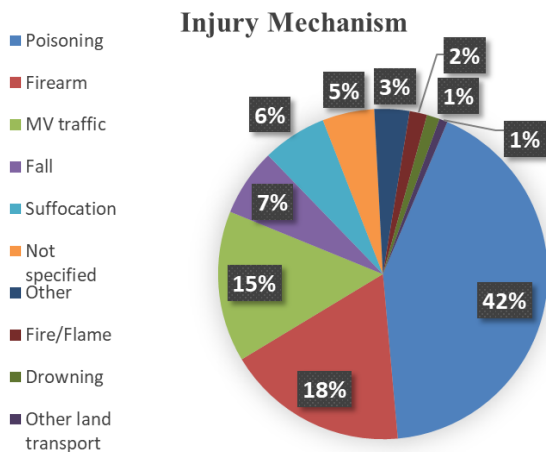
Age	Males	Females
<1	1,667	1,543
1-4	13,183	10,261
5-9	11,160	8,740
10-14	11,931	9,616
15-19	14,569	12,910
20-24	15,179	13,717
25-34	29,848	25,800
35-44	27,154	23,602
45-54	23,089	21,835
55-64	20,127	20,351
65-74	12,698	16,825
75-84	7,923	13,108
85+	3,808	8,653

*Age-adjusted rate per 100,000 population



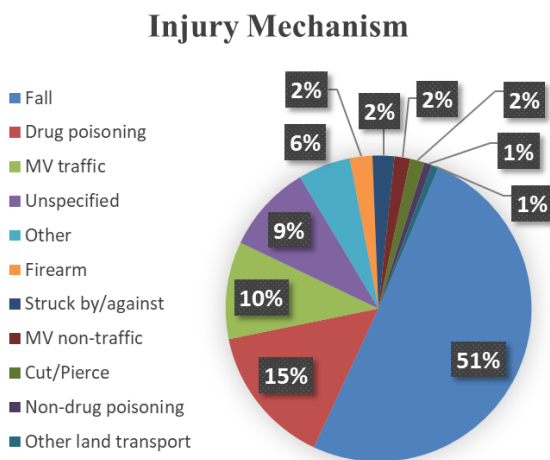
All Injuries by Injury Mechanism

Mortality



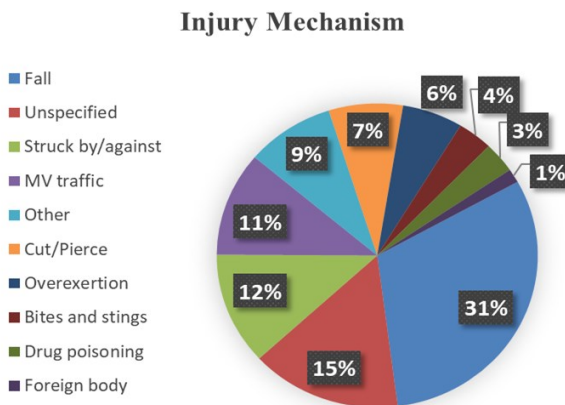
Injury Mechanism	Count
Poisoning	2,037
Firearm	860
MV traffic	714
Fall	319
Suffocation	305
Not specified	246
Other	166
Fire/Flame	83
Drowning	61
Other land transport	39

Inpatient Hospitalizations



Injury Mechanism	Count
Fall	11,279
Drug poisoning	3,308
MV traffic	2,296
Unspecified	2,086
Other	1,239
Firearm	530
Struck by/against	515
MV non-traffic	370
Cut/Pierce	340
Non-drug poisoning	182
Other land transport	160

Emergency Department Visits



Injury Mechanism	Count
Fall	117,623
Unspecified	57,658
Struck by/against	45,262
MV traffic	42,080
Other	33,871
Cut/Pierce	28,344
Overexertion	23,158
Bites and stings	13,403
Drug poisoning	12,337
Foreign body	5,561

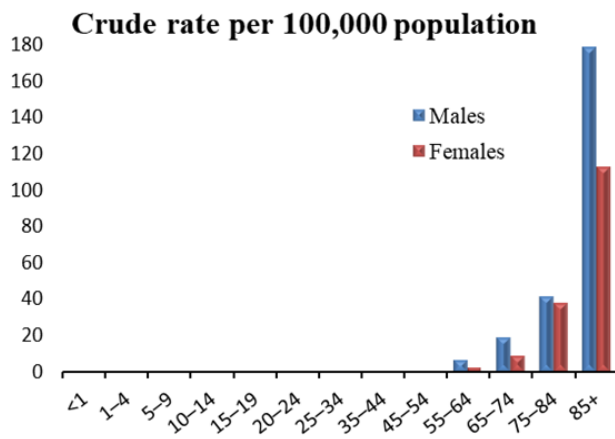
Unintentional Falls by Age and Sex

Mortality

Total: 309 (5.7*)

Males: 164 (7.2*)

Females: 145 (4.6*)



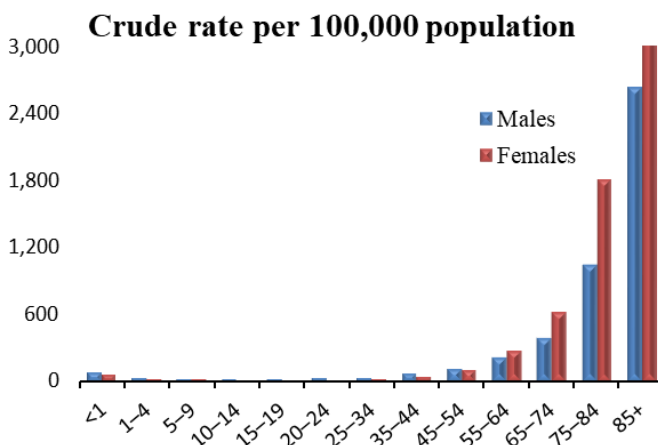
Age	Males	Females
<1	0	0
1-4	0	0
5-9	0	0
10-14	0	0
15-19	0	0
20-24	0	0
25-34	#	#
35-44	#	#
45-54	##	##
55-64	18	7
65-74	41	21
75-84	41	49
85+	51	61

Inpatient Hospitalization

Total: 11,271 (207.1*)

Males: 3,923 (167.8*)

Females 7,348 (234.3*)



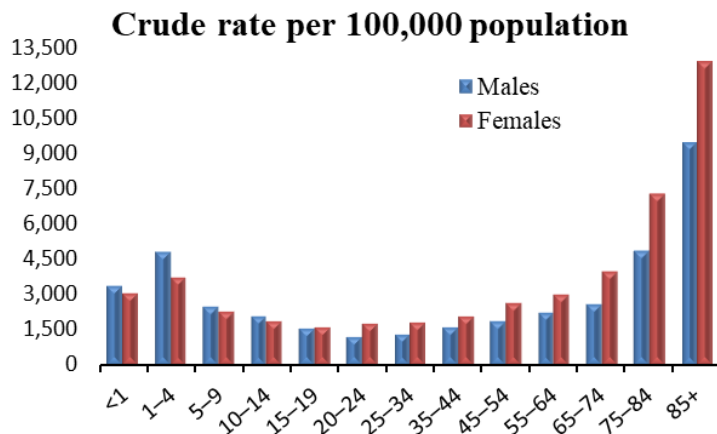
Age	Males	Females
<1	20	14
1-4	26	20
5-9	22	26
10-14	24	10
15-19	28	9
20-24	37	14
25-34	90	58
35-44	175	113
45-54	294	277
55-64	610	828
65-74	830	1,537
75-84	1,020	2,321
85+	747	2,121

Emergency Department Visits

Total: 117,570 (2,516.0*)

Males: 49,226 (2,234.9*)

Females: 68,344 (2,756.7*)



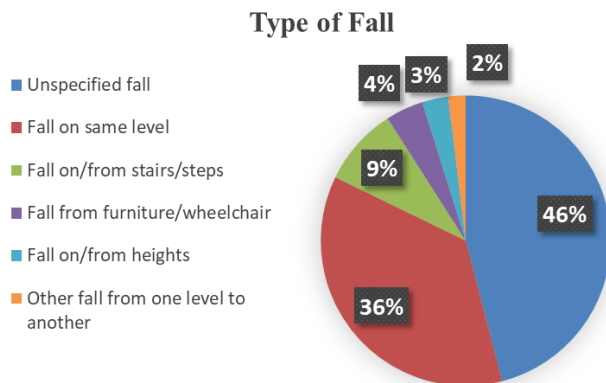
Age	Males	Females
<1	891	780
1-4	5,340	3,947
5-9	3,532	3,024
10-14	2,931	2,560
15-19	2,197	2,214
20-24	1,784	2,529
25-34	3,862	5,128
35-44	4,306	5,658
45-54	5,091	7,301
55-64	6,257	9,161
65-74	5,593	9,781
75-84	4,747	9,299
85+	2,695	6,962

*Age-adjusted rate per 100,000 population
#At least one but fewer than five



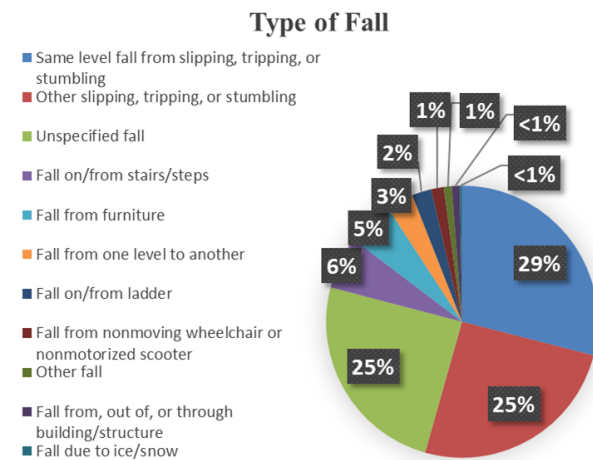
Unintentional Falls by Type of Fall

Mortality



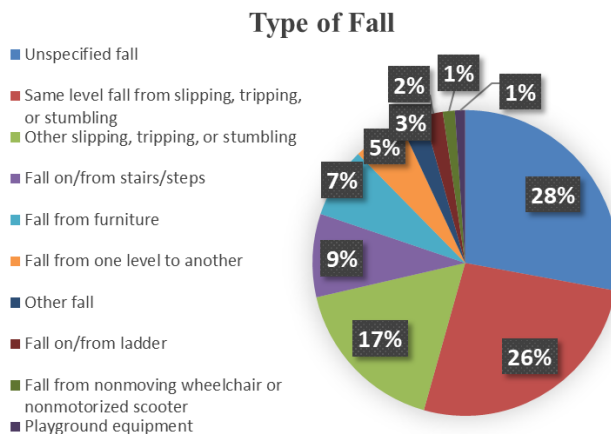
Type of Fall	Count
Unspecified fall	142
Fall on same level	112
Fall on/from stairs/steps	27
Fall from furniture/wheelchair	13
Fall on/from heights	9
Other fall from one level to another	6

Inpatient Hospitalizations



Type of Fall	Count
Same level fall from slipping, tripping, or stumbling	3,267
Other slipping, tripping, or stumbling	2,862
Unspecified fall	2,783
Fall on/from stairs/steps	705
Fall from furniture	618
Fall from one level to another	363
Fall on/from ladder	260
Fall from nonmoving wheelchair or nonmotorized scooter	169
Other fall	108
Fall from, out of, or through building/structure	106
Fall due to ice/snow	30

Emergency Department Visits



Type of Fall	Count
Unspecified fall	32,802
Same level fall from slipping, tripping, or stumbling	31,113
Other slipping, tripping, or stumbling	20,017
Fall on/from stairs/steps	10,365
Fall from furniture	8,735
Fall from one level to another	6,379
Other fall	3,005
Fall on/from ladder	2,387
Fall from nonmoving wheelchair or nonmotorized scooter	1,494
Playground equipment	1,273

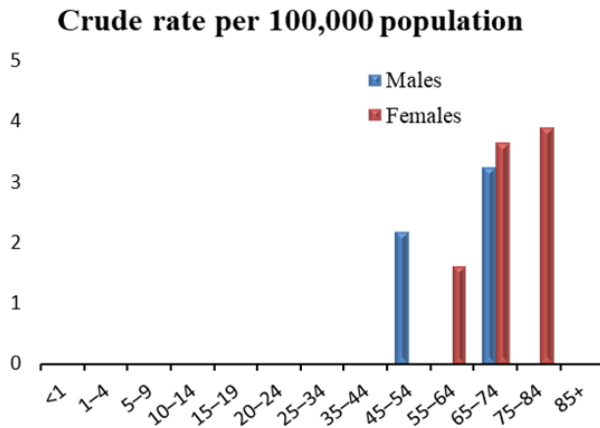
Unintentional Fire-Related Injuries by Age and Sex

Mortality

Total: 68 (1.4*)

Males: 31 (1.4*)

Females: 37 (1.4*)



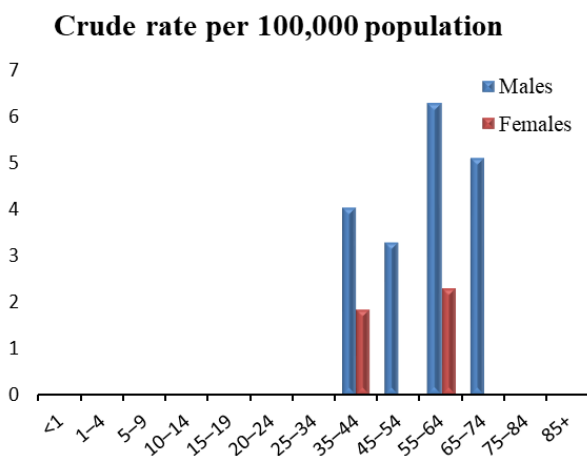
Age	Males	Females
<1	0	#
1-4	#	#
5-9	#	#
10-14	#	#
15-19	#	0
20-24	#	#
25-34	0	#
35-44	#	#
45-54	6	#
55-64	#	5
65-74	7	9
75-84	#	5
85+	#	#

Inpatient Hospitalizations

Total: 99 (2.1*)

Males: 68 (2.9*)

Females: 31 (1.3*)



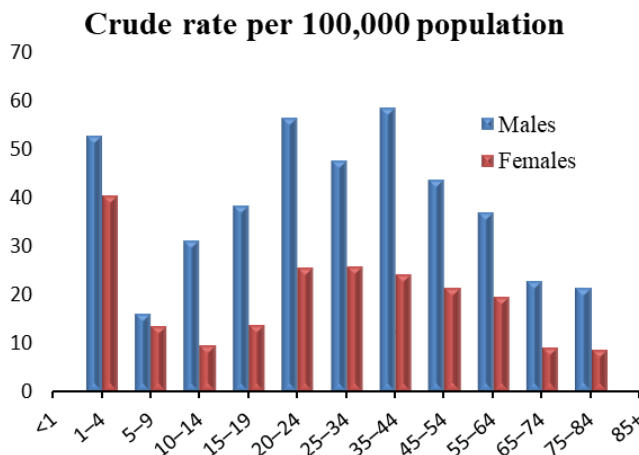
Age	Males	Females
<1	0	0
1-4	#	#
5-9	#	#
10-14	#	#
15-19	#	#
20-24	#	#
25-34	#	#
35-44	11	5
45-54	9	#
55-64	18	7
65-74	11	#
75-84	#	#
85+	#	0

Emergency Department Visits

Total: 1,309 (30.3*)

Males: 877 (40.8*)

Females: 432 (19.8*)



Age	Males	Females
<1	#	#
1-4	59	43
5-9	23	18
10-14	45	13
15-19	56	19
20-24	87	37
25-34	144	75
35-44	161	67
45-54	120	60
55-64	106	60
65-74	49	22
75-84	21	11
85+	#	##

*Age-adjusted rate per 100,000 population

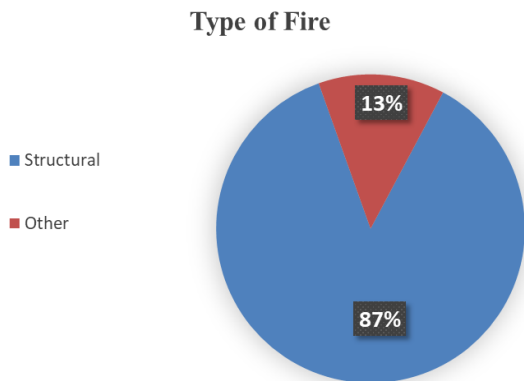
#At least one but fewer than five

##Suppressed to prevent indirect disclosure



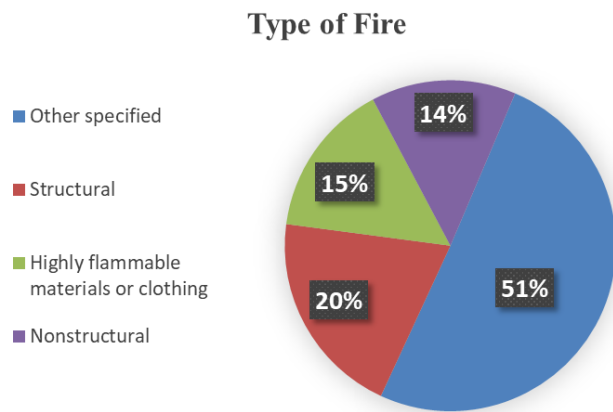
Unintentional Fire-Related Injuries by Type of Fire

Mortality



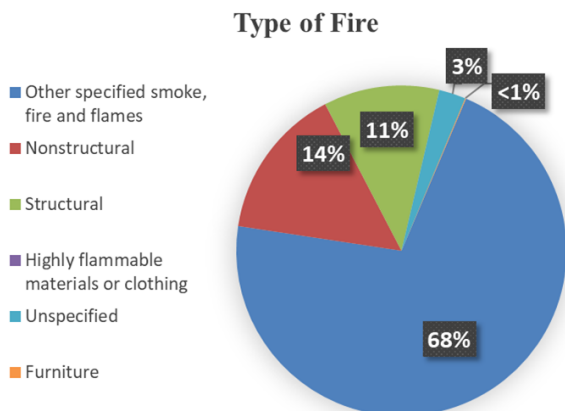
Type of Fire	Count
Structural	59
Unspecified	9

Inpatient Hospitalizations



Type of Fire	Count
Other specified	50
Structural	20
Highly flammable materials or clothing	15
Nonstructural	14

Emergency Department Visits



Type of Fire	Count
Other specified	896
Nonstructural	189
Structural	143
Highly flammable materials or clothing	47
Unspecified	##
Furniture	#

#At least one but fewer than five

##Suppressed to prevent indirect disclosure

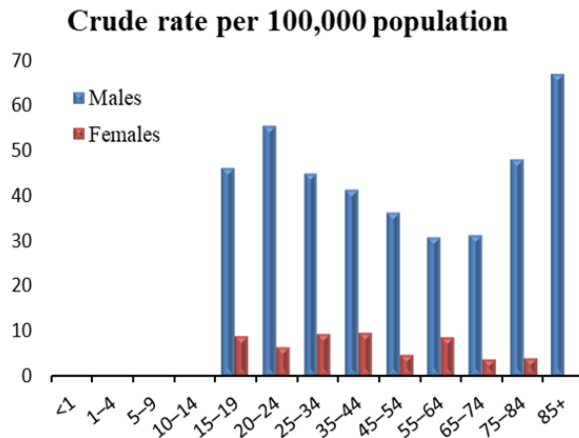
Firearm-Related Injuries by Age and Sex

Mortality

Total: 860 (19.1*)

Males: 730 (33.1*)

Females: 130 (5.8*)



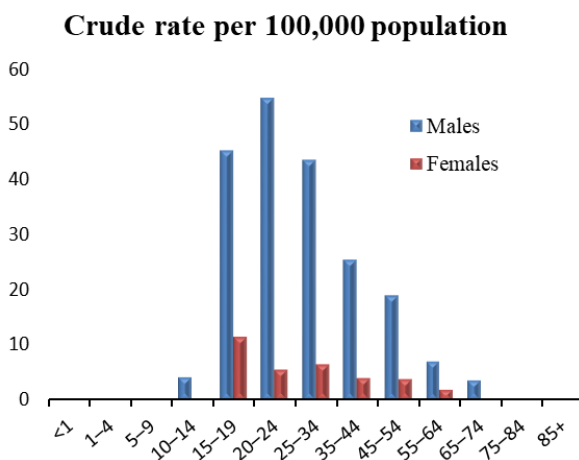
Age	Males	Females
<1	0	0
1-4	#	#
5-9	#	0
10-14	#	#
15-19	67	12
20-24	85	9
25-34	135	26
35-44	113	26
45-54	99	13
55-64	88	26
65-74	67	9
75-84	47	5
85+	19	0

Inpatient Hospitalizations

Total: 530 (12.6*)

Males: 449 (21.2*)

Females: 81 (3.9*)



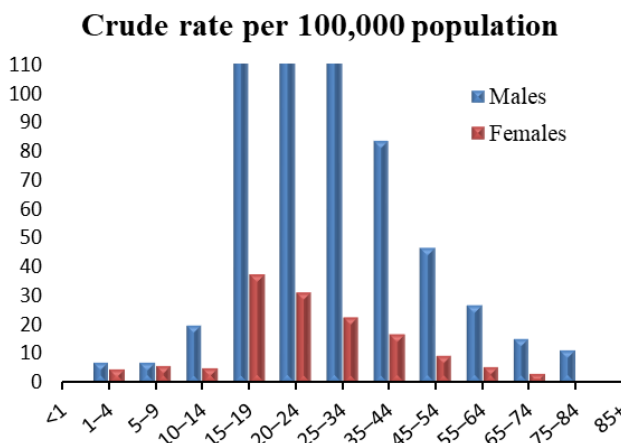
Age	Males	Females
<1	0	#
1-4	#	#
5-9	#	#
10-14	6	#
15-19	66	16
20-24	84	8
25-34	131	19
35-44	70	11
45-54	52	11
55-64	20	6
65-74	8	#
75-84	#	#
85+	#	0

Emergency Department Visits

Total: 1,655 (39.4*)

Males: 1,370 (64.7*)

Females: 285 (13.7*)



Age	Males	Females
<1	#	#
1-4	8	5
5-9	10	8
10-14	29	7
15-19	212	52
20-24	237	45
25-34	387	65
35-44	229	46
45-54	128	26
55-64	77	17
65-74	33	8
75-84	11	#
85+	##	#

*Age-adjusted rate per 100,000 population

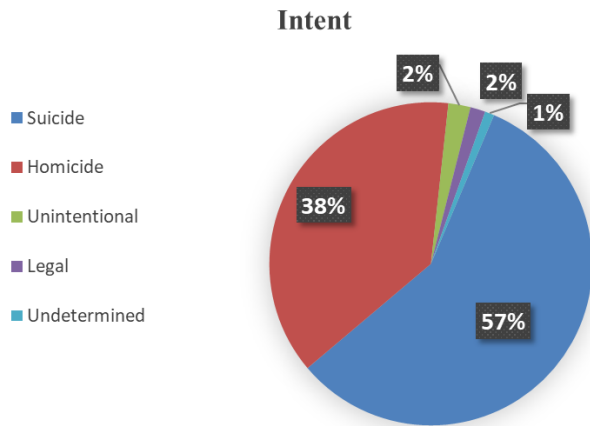
#At least one but fewer than five

##Suppressed to prevent indirect disclosure



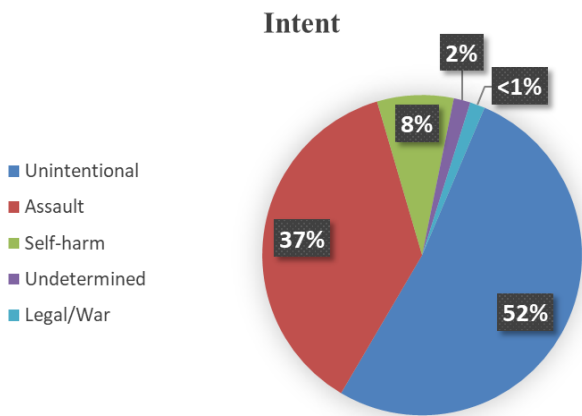
Firearm-Related Injuries by Intent

Mortality



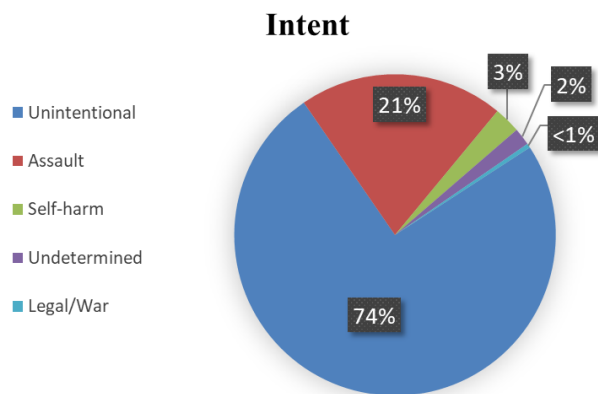
Intent	Count
Suicide	494
Homicide	326
Unintentional	19
Legal	13
Undetermined	8

Inpatient Hospitalizations



Intent	Count
Unintentional	276
Assault	196
Self-harm	41
Undetermined	9
Legal/War	8

Emergency Department Visits



Intent	Count
Unintentional	1,234
Assault	341
Self-harm	44
Undetermined	29
Legal/War	7

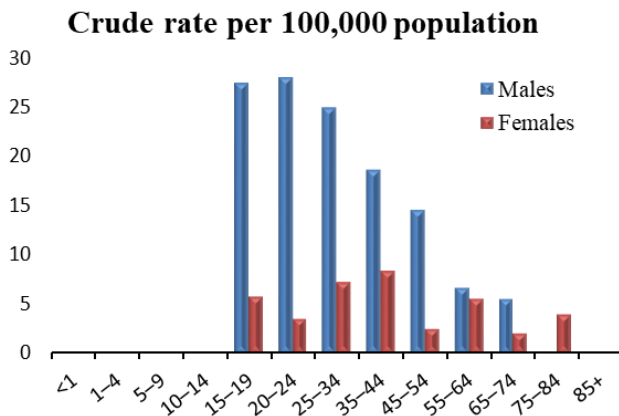
Homicide and Assault by Age and Sex

Mortality

Total: 385 (9.0*)

Males: 290 (13.6*)

Females: 95 (4.3*)



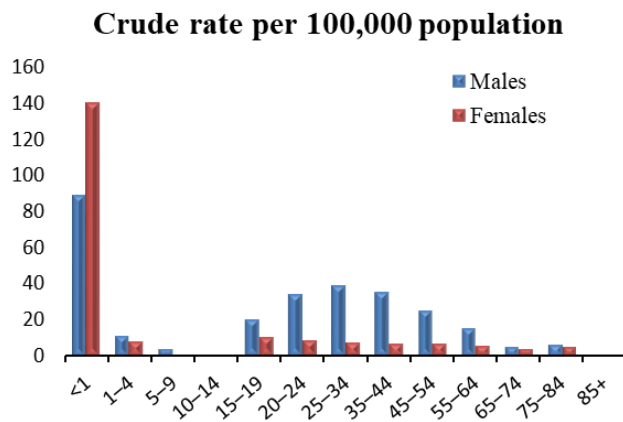
Age	Males	Females
<1	#	#
1-4	#	#
5-9	#	0
10-14	#	#
15-19	40	8
20-24	43	5
25-34	75	21
35-44	51	23
45-54	40	7
55-64	19	17
65-74	12	5
75-84	#	5
85+	#	0

Inpatient Hospitalizations

Total: 641 (15.1*)

Males: 473 (22.4*)

Females: 168 (7.9*)



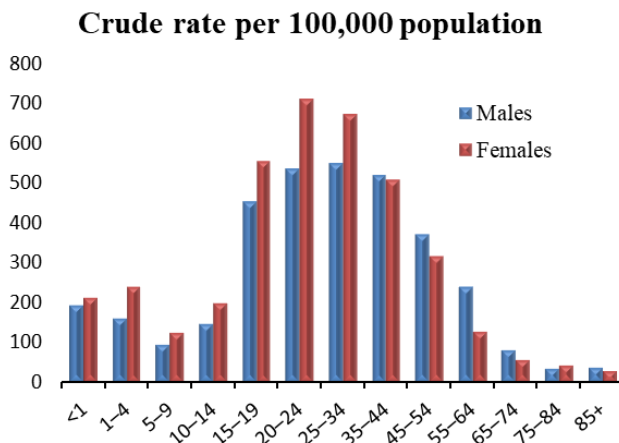
Age	Males	Females
<1	24	36
1-4	12	8
5-9	5	#
10-14	#	#
15-19	29	14
20-24	53	12
25-34	117	21
35-44	97	19
45-54	68	18
55-64	44	17
65-74	10	8
75-84	6	6
85+	#	#

Emergency Department Visits

Total: 14,364 (344.4*)

Males: 7,020 (332.1*)

Females: 7,344 (358.4*)



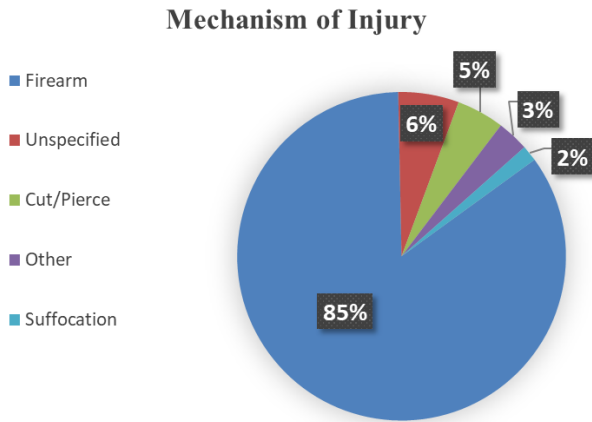
Age	Males	Females
<1	51	54
1-4	176	252
5-9	132	164
10-14	208	272
15-19	657	767
20-24	823	1,023
25-34	1,647	1,941
35-44	1,418	1,402
45-54	1,010	882
55-64	684	384
65-74	171	136
75-84	33	52
85+	10	15

*Age-adjusted rate per 100,000 population
#At least one but fewer than five



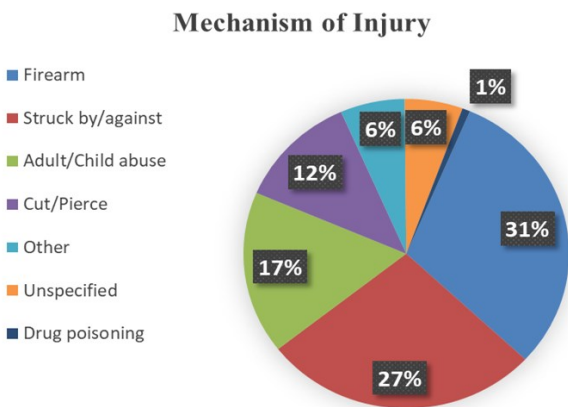
Homicide and Assault by Mechanism of Injury

Mortality



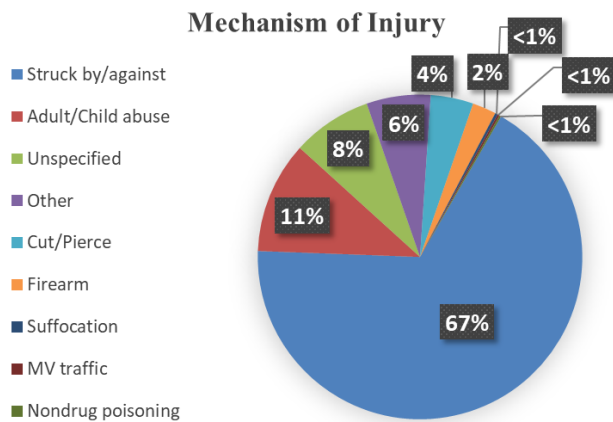
Mechanism of Injury	Count
Firearm	326
Cut/Pierce	23
Unspecified	18
Other	12
Suffocation	6

Inpatient Hospitalizations



Mechanism of Injury	Count
Firearm	196
Struck by/against	176
Adult/Child abuse	109
Cut/Pierce	77
Other	41
Unspecified	37
Drug poisoning	5

Emergency Department Visits



Mechanism of Injury	Count
Struck by/against	9,660
Adult/Child abuse	1,600
Unspecified	1,142
Other	917
Cut/Pierce	611
Firearm	341
Suffocation	38
MV traffic	29
Nondrug poisoning	26

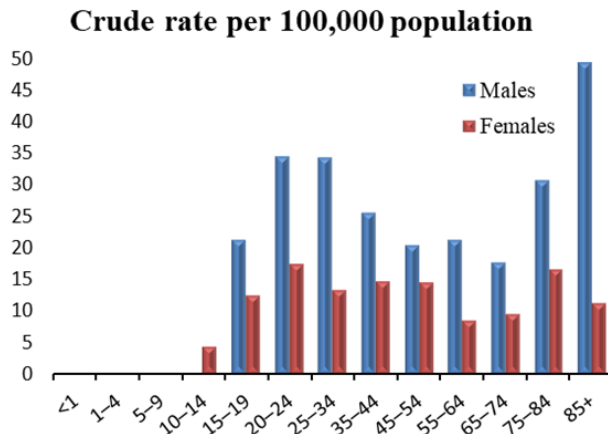
Unintentional MV Traffic Crashes by Age and Sex

Mortality

Total: 714 (15.9*)

Males: 466 (21.1*)

Females: 248 (11.0*)



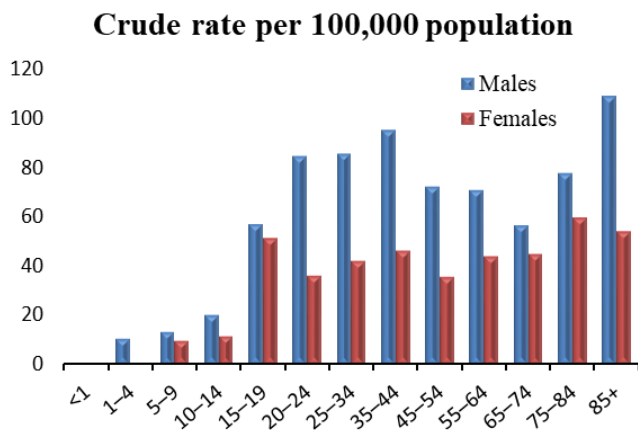
Age	Males	Females
<1	0	#
1-4	#	#
5-9	#	#
10-14	#	6
15-19	31	17
20-24	53	25
25-34	103	38
35-44	70	40
45-54	56	40
55-64	61	26
65-74	38	23
75-84	30	21
85+	14	6

Inpatient Hospitalizations

Total: 2,284 (50.5*)

Males: 1,421 (64.8*)

Females: 863 (36.7*)



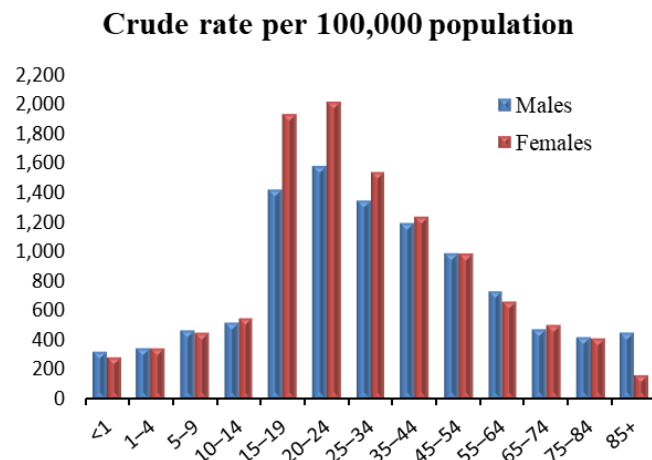
Age	Males	Females
<1	0	#
1-4	12	##
5-9	19	13
10-14	29	16
15-19	83	71
20-24	130	52
25-34	258	121
35-44	260	127
45-54	198	99
55-64	203	135
65-74	122	110
75-84	76	76
85+	31	29

Emergency Department Visits

Total: 42,029 (976.2*)

Males: 20,089 (932.8*)

Females: 21,940 (1,023.7*)



Age	Males	Females
<1	88	74
1-4	391	365
5-9	667	609
10-14	747	760
15-19	2,065	2,679
20-24	2,429	2,910
25-34	4,044	4,455
35-44	3,270	3,419
45-54	2,711	2,759
55-64	2,099	2,052
65-74	1,035	1,236
75-84	415	534
85+	128	88

*Age-adjusted rate per 100,000 population

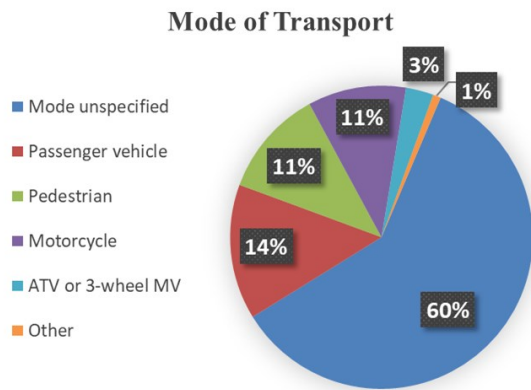
#At least one but fewer than five

##Suppressed to prevent indirect disclosure



Unintentional MV Traffic Crashes by Mode of Transport

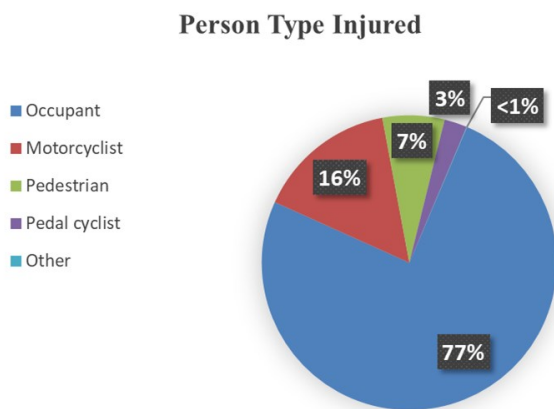
Mortality



Mode of Transport	Count
Mode unspecified	427
Passenger vehicle	103
Pedestrian	82
Motorcycle	75
ATV or 3-wheel MV	21
Other	6

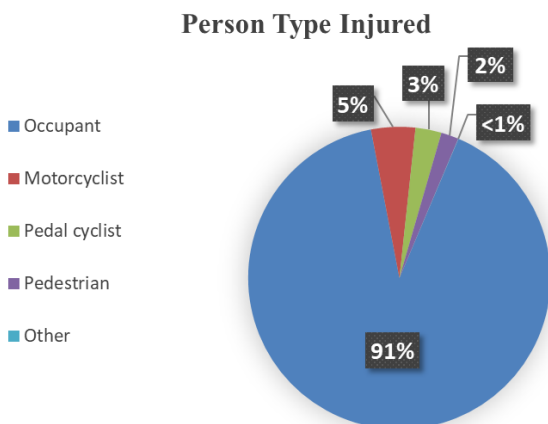
Note: "Other" includes persons whose mode of transport was a pedal cycle or a heavy transport vehicle.

Inpatient Hospitalizations



Person Type Injured	Count
Occupant	1,721
Motorcyclist	350
Pedestrian	155
Pedal cyclist	##
Other	#

Emergency Department Visits



Person Type Injured	Count
Occupant	38,074
Motorcyclist	1,987
Pedal cyclist	1,170
Pedestrian	789
Other	9

Note: "Other" includes emergency department visits due to injuries related to persons boarding and alighting and unspecified occupants of a motor vehicle.

#At least one but fewer than five

##Suppressed to prevent indirect disclosure

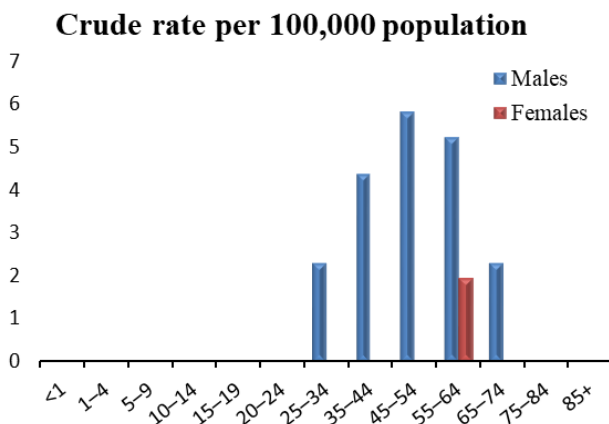
Non-Drug Poisoning by Age and Sex

Mortality

Total: 72 (1.5*)

Males: 59 (2.6*)

Females: 13 (0.5*)



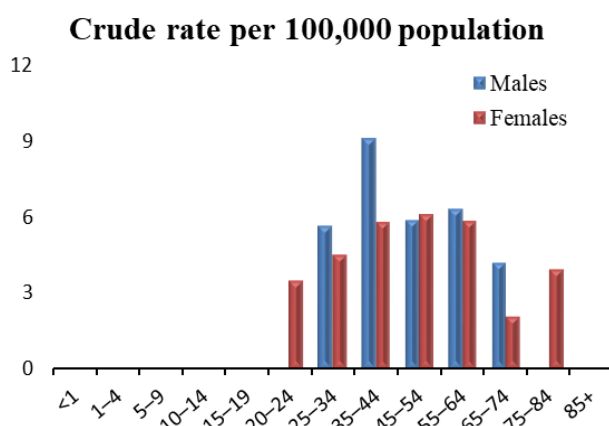
Age	Males	Females
<1	0	0
1-4	0	0
5-9	0	0
10-14	0	0
15-19	#	0
20-24	#	0
25-34	7	#
35-44	12	#
45-54	16	#
55-64	15	6
65-74	5	0
75-84	0	#
85+	#	0

Inpatient Hospitalizations

Total: 182 (4.0*)

Males: 96 (4.4*)

Females: 86 (3.7*)



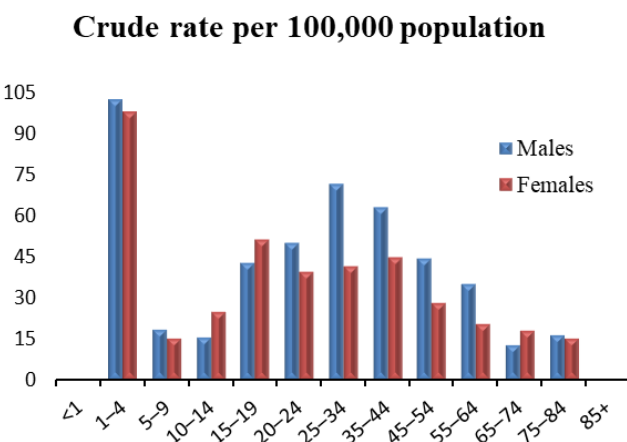
Age	Males	Females
<1	#	0
1-4	#	#
5-9	0	0
10-14	0	#
15-19	#	#
20-24	#	5
25-34	17	13
35-44	25	16
45-54	16	17
55-64	18	18
65-74	9	5
75-84	#	5
85+	#	#

Emergency Department Visits

Total: 1,719 (40.7*)

Males: 972 (45.9*)

Females: 747 (35.5*)



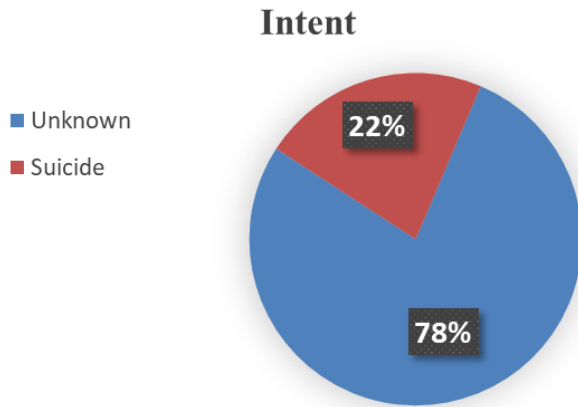
Age	Males	Females
<1	##	##
1-4	114	104
5-9	26	20
10-14	22	34
15-19	62	71
20-24	77	57
25-34	215	120
35-44	173	123
45-54	121	78
55-64	100	62
65-74	27	44
75-84	16	19
85+	#	#

*Age-adjusted rate per 100,000 population
#At least one but fewer than five



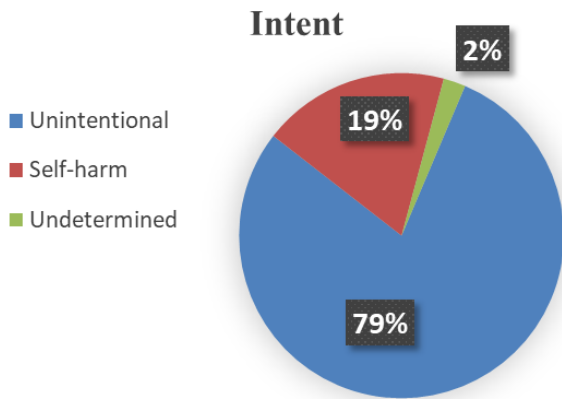
Non-Drug Poisoning by Intent

Mortality



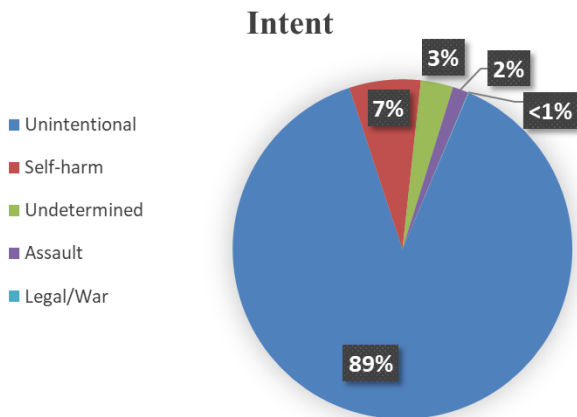
Intent	Count
Unknown	56
Suicide	16

Inpatient Hospitalizations



Intent	Count
Unintentional	144
Self-harm	##
Undetermined	#

Emergency Department Visits



Intent	Count
Unintentional	1,522
Self-harm	117
Undetermined	53
Assault	##
Legal/War	#

#At least one but fewer than five

##Suppressed to prevent indirect disclosure

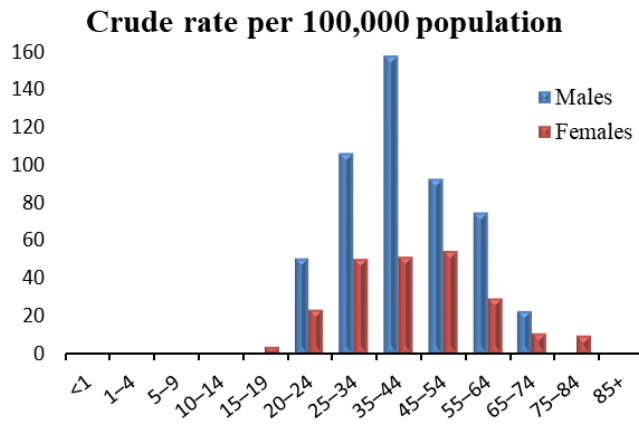
Drug Poisoning by Age and Sex

Mortality

Total: 1,965 (46.0*)

Males: 1,358 (64.2*)

Females: 607 (27.8*)



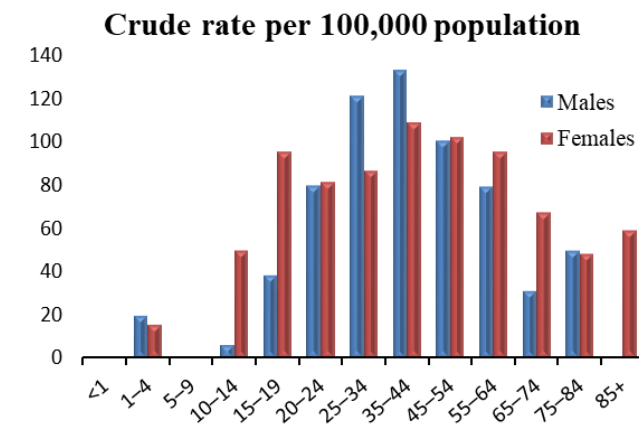
Age	Males	Females
<1	0	#
1-4	0	0
5-9	0	#
10-14	0	#
15-19	##	5
20-24	77	33
25-34	319	144
35-44	432	140
45-54	253	151
55-64	214	90
65-74	49	26
75-84	#	12
85+	0	#

Inpatient Hospitalizations

Total: 3,308 (74.7*)

Males: 1,572 (73.0*)

Females: 1,736 (76.2*)



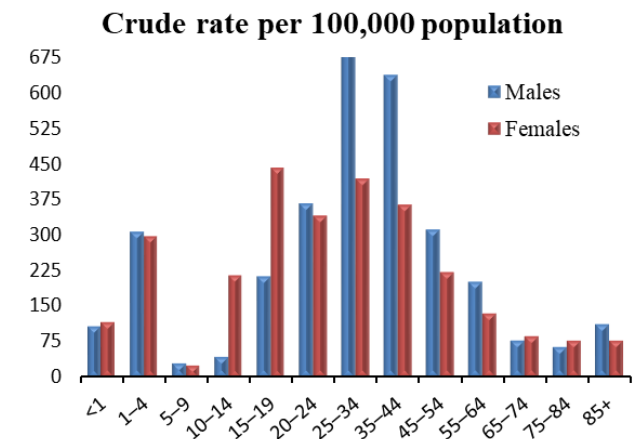
Age	Males	Females
<1	#	#
1-4	22	17
5-9	0	#
10-14	9	69
15-19	56	133
20-24	123	118
25-34	366	251
35-44	366	302
45-54	277	287
55-64	228	295
65-74	68	166
75-84	49	62
85+	##	32

Emergency Department Visits

Total: 12,337 (295.2*)

Males: 6,933 (332.6*)

Females: 5,404 (258.3*)



Age	Males	Females
<1	29	30
1-4	343	315
5-9	43	35
10-14	62	297
15-19	310	614
20-24	566	495
25-34	2,137	1,211
35-44	1,748	1,006
45-54	854	625
55-64	577	421
65-74	168	214
75-84	64	99
85+	32	42

*Age-adjusted rate per 100,000 population

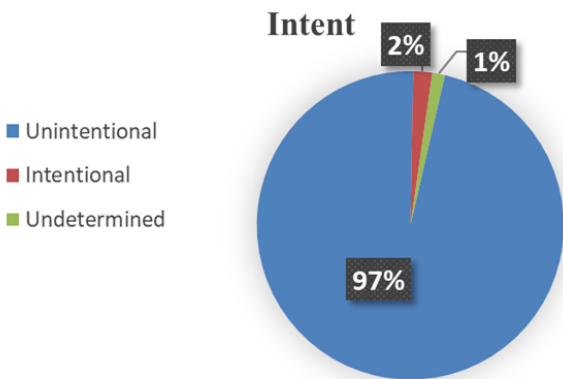
#At least one but fewer than five

##Suppressed to prevent indirect disclosure



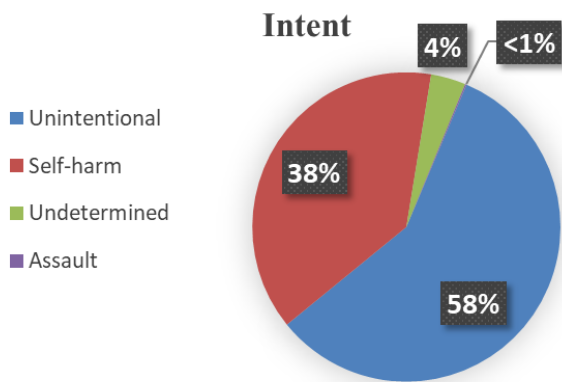
Drug Poisoning by Intent

Mortality



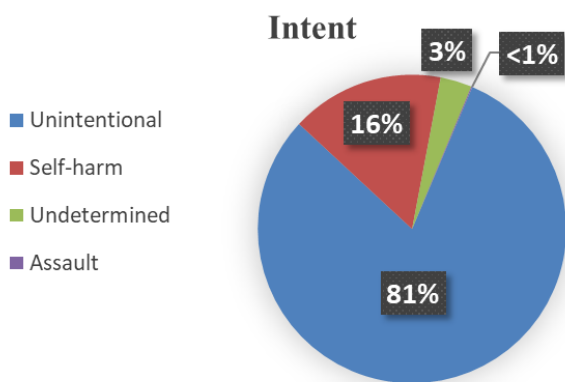
Intent	Count
Unintentional	1,900
Intentional	39
Undetermined	26

Inpatient Hospitalizations



Intent	Count
Unintentional	1,910
Self-harm	1,272
Undetermined	121
Assault	5

Emergency Department Visits



Intent	Count
Unintentional	9,935
Self-harm	1,981
Undetermined	407
Assault	14

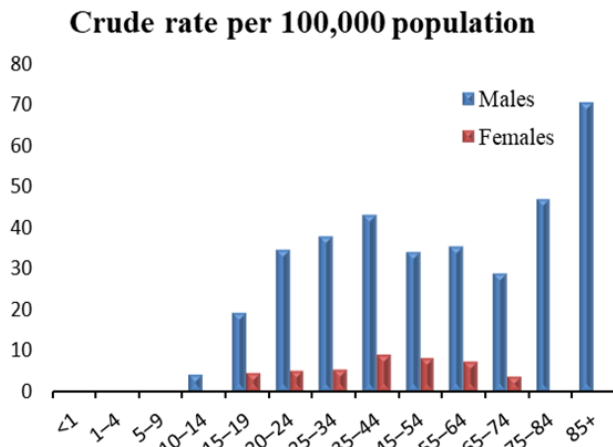
Suicide and Self-Injury by Age and Sex

Mortality

Total: 755 (16.6*)

Males: 641 (29.0*)

Females: 114 (5.0*)



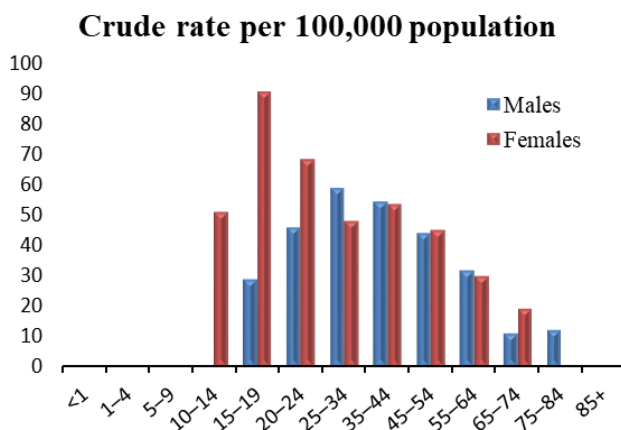
Age	Males	Females
<1	0	0
1-4	0	0
5-9	0	0
10-14	6	#
15-19	28	6
20-24	53	7
25-34	114	15
35-44	118	24
45-54	93	22
55-64	101	22
65-74	62	9
75-84	46	#
85+	20	#

Inpatient Hospitalizations

Total: 1,563 (36.3*)

Males: 699 (32.5*)

Females: 864 (40.4*)



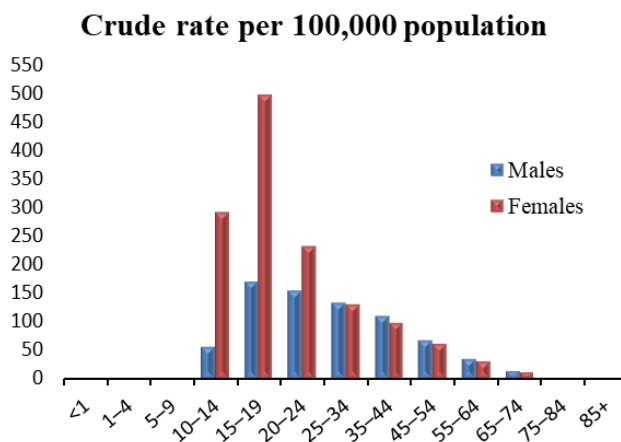
Age	Males	Females
<1	0	0
1-4	0	0
5-9	0	0
10-14	##	71
15-19	42	126
20-24	71	99
25-34	178	139
35-44	149	149
45-54	121	127
55-64	91	93
65-74	24	48
75-84	12	##
85+	#	#

Emergency Department Visits

Total: 3,945 (95.7*)

Males: 1,575 (75.1*)

Females: 2,370 (117.4*)



Age	Males	Females
<1	0	0
1-4	0	0
5-9	0	0
10-14	79	402
15-19	246	688
20-24	234	334
25-34	396	376
35-44	300	268
45-54	182	170
55-64	98	94
65-74	29	26
75-84	##	##
85+	#	#

*Age-adjusted rate per 100,000 population

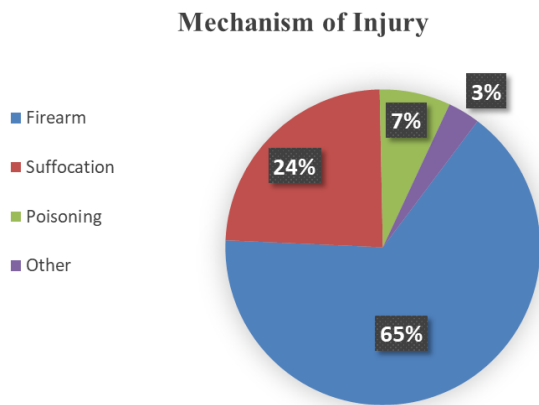
#At least one but fewer than five

##Suppressed to prevent indirect disclosure



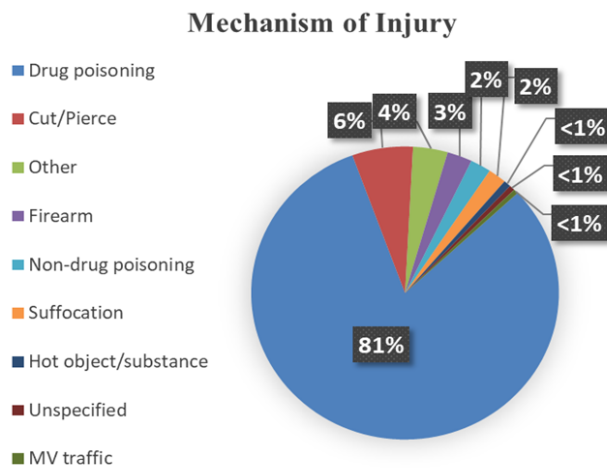
Suicide and Self-Injury by Mechanism of Injury

Mortality



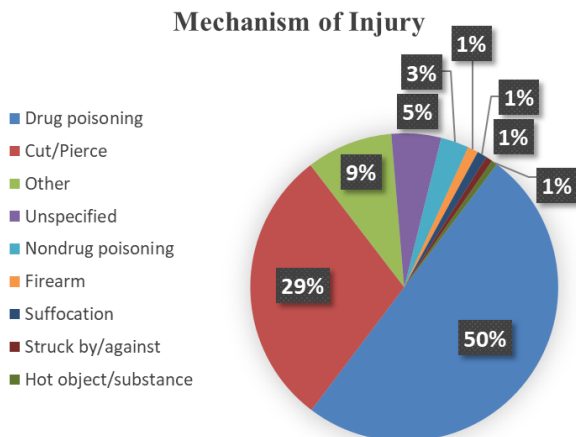
Mechanism of Injury	Count
Firearm	494
Suffocation	181
Poisoning	55
Other	25

Inpatient Hospitalizations



Mechanism of Injury	Count
Drug poisoning	1,272
Cut/Pierce	100
Other	57
Firearm	41
Non-drug poisoning	34
Suffocation	30
Hot object/substance	12
Unspecified	9
MV traffic	8

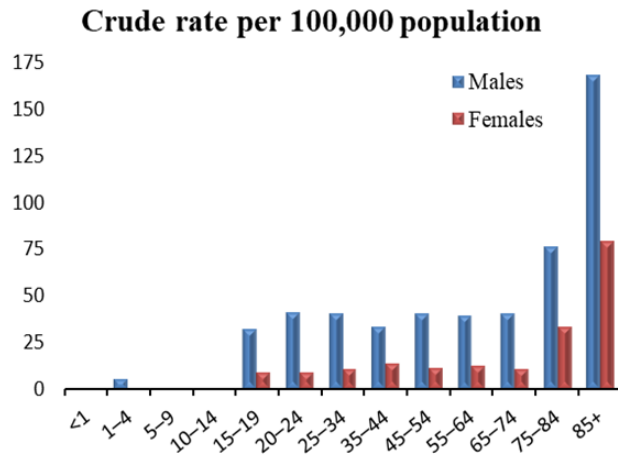
Emergency Department Visits



Mechanism of Injury	Count
Drug poisoning	1,981
Cut/Pierce	1,156
Other	353
Unspecified	206
Nondrug poisoning	117
Firearm	44
Suffocation	40
Struck by/against	25
Hot object/substance	23

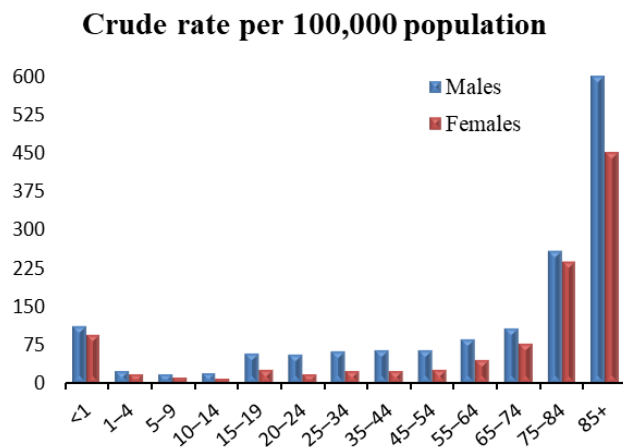
Traumatic Brain Injury by Age and Sex

Mortality Total: 1,054 (22.5*) Males: 771 (34.5*) Females: 283 (11.4*)



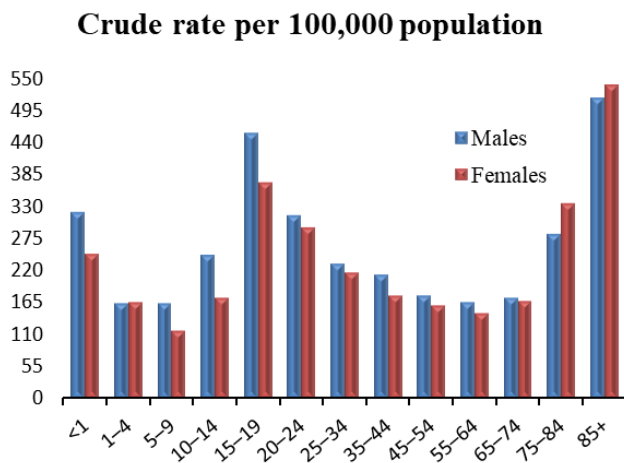
Age	Males	Females
<1	0	#
1-4	6	#
5-9	#	#
10-14	##	#
15-19	47	12
20-24	63	13
25-34	123	31
35-44	92	37
45-54	111	31
55-64	112	38
65-74	88	26
75-84	75	43
85+	48	43

Inpatient Hospitalizations Total: 2,922 (60.3*) Males: 1,717 (77.4*) Females: 1,205 (44.2*)



Age	Males	Females
<1	30	24
1-4	25	18
5-9	24	13
10-14	28	12
15-19	85	34
20-24	86	25
25-34	188	64
35-44	174	65
45-54	178	72
55-64	244	141
65-74	230	190
75-84	254	303
85+	171	244

Emergency Department Visits Total: 9,790 (221.3*) Males: 5,058 (234.3*) Females: 4,732 (207.6*)



Age	Males	Females
<1	86	64
1-4	183	176
5-9	235	158
10-14	358	239
15-19	665	516
20-24	484	426
25-34	701	626
35-44	583	493
45-54	485	447
55-64	476	453
65-74	377	413
75-84	278	430
85+	147	291

*Age-adjusted rate per 100,000 population

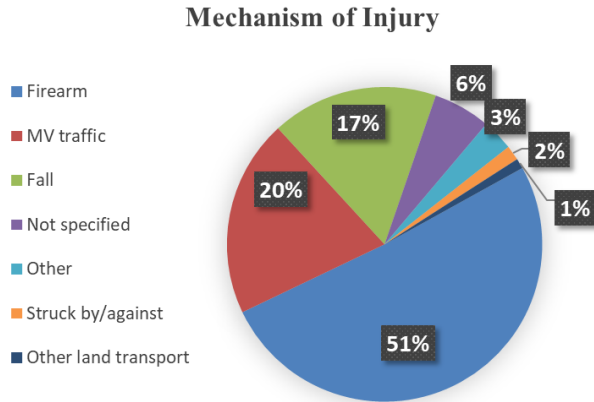
#At least one but fewer than five

##Suppressed to prevent indirect disclosure



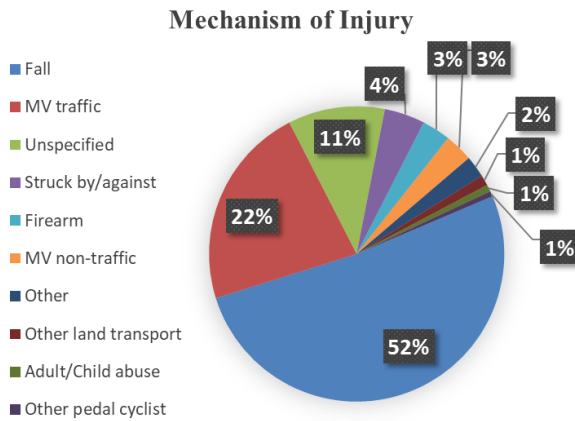
Traumatic Brain Injury by Mechanism of Injury

Mortality



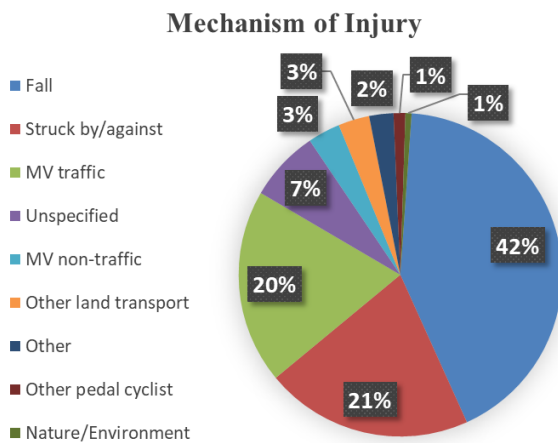
Mechanism of Injury	Count
Firearm	537
MV traffic	214
Fall	180
Not specified	62
Other	34
Struck by/against	16
Other land transport	11

Inpatient Hospitalizations



Mechanism of Injury	Count
Fall	1,506
MV traffic	652
Unspecified	310
Struck by/against	130
Firearm	91
MV non-traffic	91
Other	69
Other land transport	34
Adult/Child abuse	22
Other pedal cyclist	17

Emergency Department Visits



Mechanism of Injury	Count
Fall	4,125
Struck by/against	2,032
MV traffic	1,902
Unspecified	697
MV non-traffic	317
Other land transport	305
Other	237
Other pedal cyclist	116
Nature/Environment	59